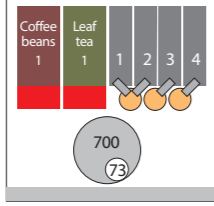
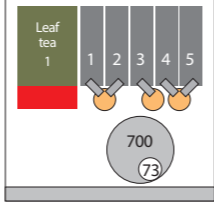


TECHNICAL SPECIFICATIONS

Zensia

	Zensia Espresso Fresh-brew	Zensia Fresh-brew Tea
<b>Capacity Configuration</b>	<p>Coffee bean hoppers: 1 Leaf tea hoppers: 1 Soluble canisters: 4 Cups Ø 73 mm: 700</p> 	<p>Coffee bean hoppers: - Leaf tea hoppers: 1 Soluble canisters: 5 Cups Ø 73 mm: 700</p> 
<b>Product Capacity</b>	<p>Coffee beans: 4.3 Kg 6 L Leaf tea: 2 Kg 6 L Soluble coffee: - Soluble decaffeinated: 1.5 Kg 6 L Soluble milk: 2.9 Kg 6 L Chocolate: 3.3 Kg 6 L Sugar: 5.7 Kg 6 L</p>	<p>Coffee beans: - Leaf tea: 2 Kg 6 L Soluble coffee: 1.5 Kg 6 L Soluble decaffeinated: 1.5 Kg 6 L Soluble milk: 2.9 Kg 6 L Chocolate: 3.3 Kg 6 L Sugar: 5.7 Kg 6 L</p>
<b>Brewing systems</b>	<p>Type: Espresso Coffee Group: AZK V10 8 g AZK V20 14 g (optional) Grinder: M03 Horeca Tea Group: Easybrew Number of mixers: 3</p>	<p>Type: Instant Tea Group: Easybrew Number of mixers: 3</p>
<b>Stirrers</b>	-	-
<b>Boiler</b>	Type Espresso Capacity volume 700 cc	Type Atmospheric Capacity volume 3000 cc
<b>Selections and pre-selections</b>	<p>Type of selec. interface Touch keypad with Distance Selection technology Pre-selections 3 Selections 12 (max 17)</p>	
<b>Connectivity and communications</b>	<p>Standard USB connectivity EXE/MDB protocol Standard EVA-DTS communications option</p>	
<b>Media screen option</b>	No	No
<b>Sensors and Filters</b>	<p>Out of Coffee detector Blocked grinder detector Electronic water temperature control. Electronic water level control. Cup detector</p>	
<b>Dimensions and weight</b>	<p>Height 1830 mm Width 600 mm Depth 625 mm</p>	
	Weight 151 Kg	Weight 145 Kg
<b>Energy</b>	Voltage 230 V Maximum Power 1800 W	Voltage 230 V Maximum Power 2100 W

COFFETEK reserves the right to alter this specification without prior notice, result of technical improvements resulting from its ongoing research.

<b>U.K.</b> Unit 1, Interplex 16, Ash Ridge Road Bradley Stoke, Bristol BS32 4QE Tel.: 01275 844 471	<b>España</b> Avda. San Silvestre, s/n 31350 Peralta (Navarra) Tel.: 948 709 709*	<b>Deutschland</b> Am Turm 86 53721 Siegburg Tel.: 02241- 595 70	<b>France</b> 6 Allée de Londres Le Madras Bat. C2 91140 Villejust Tel.: 01 69 75 42 10	<b>Portugal</b> Bela Vista Office Estrada de Paço de Arcos, 66 2735-336 Cacem Tel.: 1210 985 212	<b>Colombia</b> Vía la Virginia, Corregimiento Caimalito. Bodega B-16. Zona Franca Internacional Pereira Tel.: +57 6 3110513	<b>United States</b> 3809 Beam Road, Suite H Charlotte, NC 28217 Tel.: +1 (980) 237-5065
---	--	---	---	---	---	---

Coffee & Vending Systems Division



sales@coffetek.co.uk  
www.coffetek.co.uk



**Zensia**  
The automatic  
Barista arrives for  
vending



## Focus on Coffee quality



### Offer a wide menu of delicious beverages

Zensia brings you a full range of delicious coffee shop style drinks. Whether you want the true taste of **espresso**, a **freshly brewed leaf tea** or something a little more indulgent, Zensia has it all to offer.

Available in two configurations, instant coffee and leaf tea or espresso with leaf tea.

Both models have a fully automatic cup dispense system offering 7, 9 or 12 oz cups.



### Modular solutions

Choose the perfect combination for your establishment, combining the snack/food Mistral+ models with Zensia.

The hot drinks equipment can operate as control module using a connection kit. The Mistral+ products are dispensed by choosing the selection via the Zensia. This way you can save space as the Mistral+ independent payment module is not required and choose the snack/food products using the Distance Selection Technology.

### Attractive and customisable: the centre of attention

Finished in stunning ebony gloss Zensia will compliment any environment grabbing the attention of potential consumers.

The design is **minimalist, ergonomic and intuitive**.

- **Exclusive back-lit keypad** with screen effect.
- **Customisable:** Front and decals.



### Making your work easier is our main aim



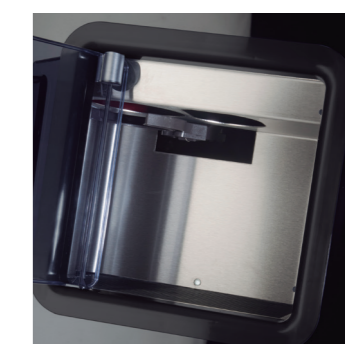
Installation and programming extremely straightforward:

- Pre-installed profiles.
- 20 programmable buttons.
- USB programming.
- Standard EVA-DTS communications option.



Easy maintenance and product replacement:

- Product can be refilled without the removal of canisters.
- Flat surfaces for easy cleaning.
- Soluble system designed to avoid any incidence and product blockage.
- Programmable filter change alerts system.



Security and antivandalism:

- Acrylic front with rear reinforcement in galvanized steel.
- More secure Cup Station constructed from stainless steel.
- Lower part of the door with a reinforced metal panel.



### Distance Selection Technology: Frictionless user experience

Our elegant interface provides up to 20 beverage options on a user-friendly selection panel equipped with the patented Distance Selection Technology allowing a **touchless** selection at a distance of up to 2 cm.

### Environmentally friendly

Zensia features an advanced economy feature, saving up to 35% in energy consumption, during periods of inactivity the water boiler runs at lower temperature to conserve electricity. It is also possible to set a complete shut down for a given time period.

- **Cup sensor** allows use of own cup reducing plastic and paper cup usage.
- **LED lighting**.
- **Paperless brewing system**, no paper waste.
- A+ energy efficiency certification according to the EVA EMP 3.1B

